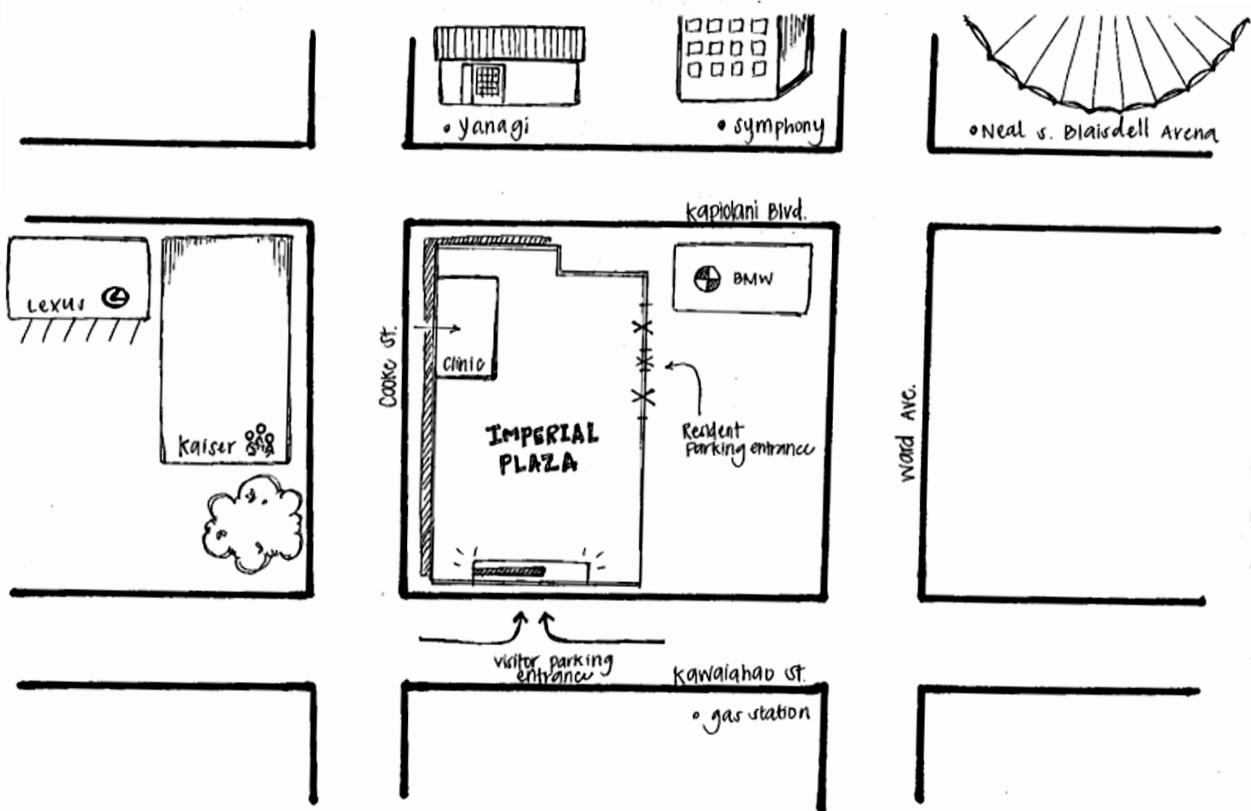


PARKING INFORMATION



Please park in any green "customer" stall on any floor.
Maximum 2 hours with validation.

Street parking is available until 3:30 pm. Any time after
vehicle will be subject to tow.



Address & Contact Info:

Suh & Suh M.D., Inc.

725 Kapiolani Blvd. C-114

Honolulu, HI 96813

Our office is on the corner of Kapiolani Blvd. and Cooke St. on the ground floor.

Parking entrance on 750 Kawaiahao St. Hon, HI 96813

When exiting the structure, please follow the signs marked "Galerie" on the Blue colored wall (You can park on level 1B or 2B for the easy access to the stairs at the end of the level.)

T) 808-946-1414 F) 808-946-1515

